

# VMware Workstation 10 Error Not enough physical memory is available to power this virtual machine

If you are using VMWare Workstation (or VMWare player) on Windows 8.1 and have just update Windows, specifically KB2995388, you may receive this error message when attempt to start a virtual machine.

This issues starts after an update.

## Issue on Windows 8.1

You attempt to start a virtual machine running on Workstation 10 and you get a message that you have no memory available to run the vm.

**Message :** Not enough physical memory is available to power this virtual machine with its configured settings.

## Solution

- Shut down all running virtual machines
- Close VMware Workstation.
- Open Command prompt in Admin mode.

opening `config.ini` file using notepad from command prompt.

```
c:\ProgramData\VMware\VMware Workstation> notepad config.ini
```

- Open `config.ini` located at `C:\ProgramData\VMware\VMware Workstation`
- Insert this line: `vmmon.disableHostParameters = TRUE`
- Save and close file.
- Reboot Windows.

## Error Message

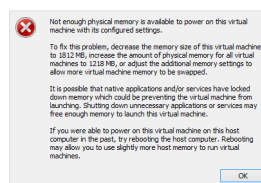


Figure 1: alt text

## Useful Links

[More info](#)